



112 FINCHLEY ROAD  
LONDON NW3 5HT  
INFO@RHWESTATES.CO.UK  
020 7431 7121

WWW.RHWESTATES.CO.UK



GREENCROFT GARDENS  
SOUTH HAMPSTEAD  
LONDON  
NW6 3PH

**PRICE: £2,100 PCM**

**FURNISHED**

*\* See Video Tour\**

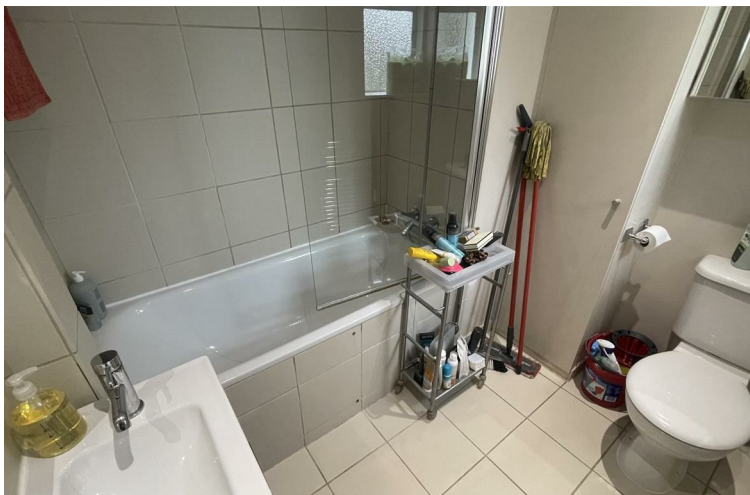
A rarely available one-bedroom flat within easy walking distance to both Finchley Road and West Hampstead's transport links.

The accommodation benefits from South south-facing reception room, a modern, fully fitted Italian kitchen, a double bedroom with fitted wardrobes, a modern tiled bathroom and wooden floors throughout.

The property also has first-come first serve off-street parking and communal gardens.

The property comes furnished.

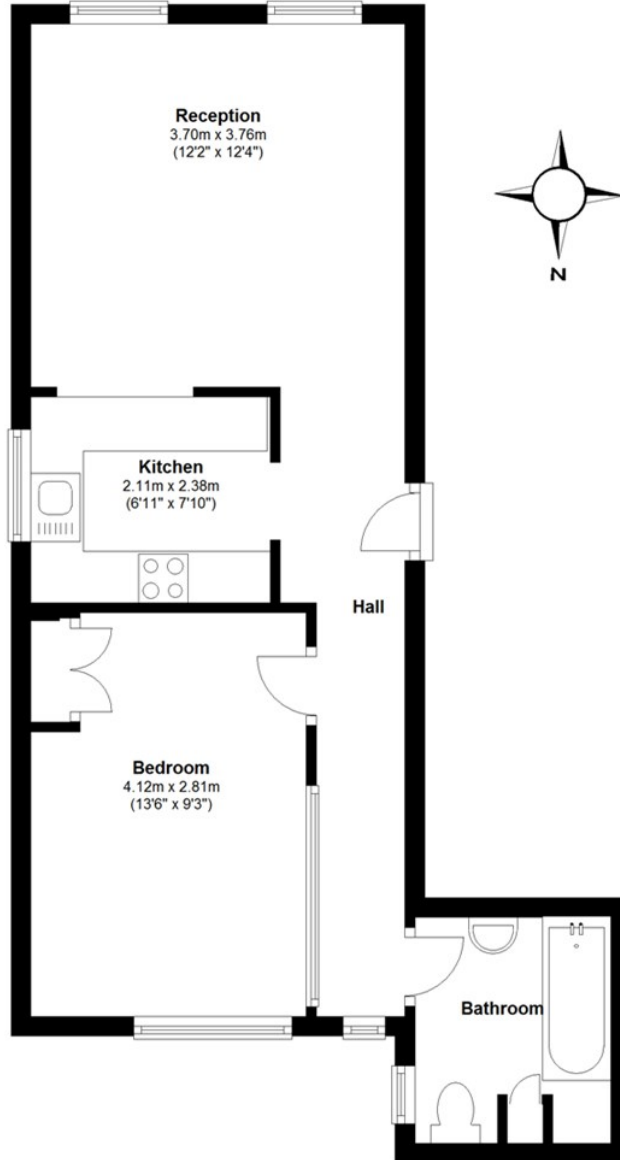





- FEATURES:**
- Modern Apartment
  - Located in the heart of South Hampstead
  - Communal Gardens
  - Close to Transport Links
  - Quiet Residential Location
  - OSP (First come first served)

## Second Floor

Approx. 43.0 sq. metres (463.3 sq. feet)



Total area: approx. 43.0 sq. metres (463.3 sq. feet)

Energy Efficiency Rating		
	Current	Potential
Very energy efficient - lower running costs		
(92 plus) <b>A</b>		
(81-91) <b>B</b>		
(69-80) <b>C</b>		
(55-68) <b>D</b>		
(39-54) <b>E</b>		
(21-38) <b>F</b>		
(1-20) <b>G</b>		
Not energy efficient - higher running costs		
<b>England &amp; Wales</b>	EU Directive 2002/91/EC	

### IMPORTANT NOTICE

Whilst every attempt has been made to ensure the accuracy of these details and floor plans contained here, measurements of doors, windows and rooms are approximate and no responsibility is taken for any error, omission or misstatement. These plans and details are for representation only as defined by RICS code of measuring practice and should be used as such by any prospective tenant. Not to scale. Copyright: RHW Estates

